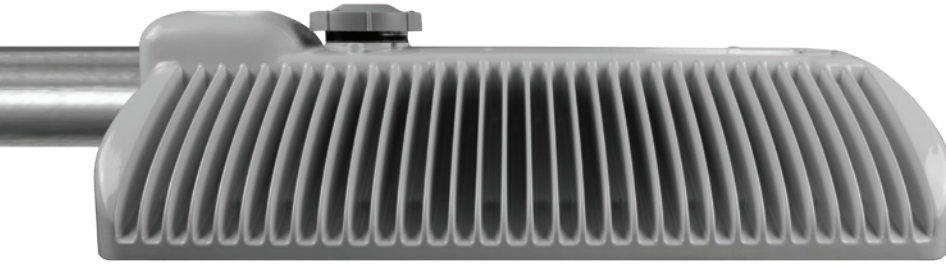
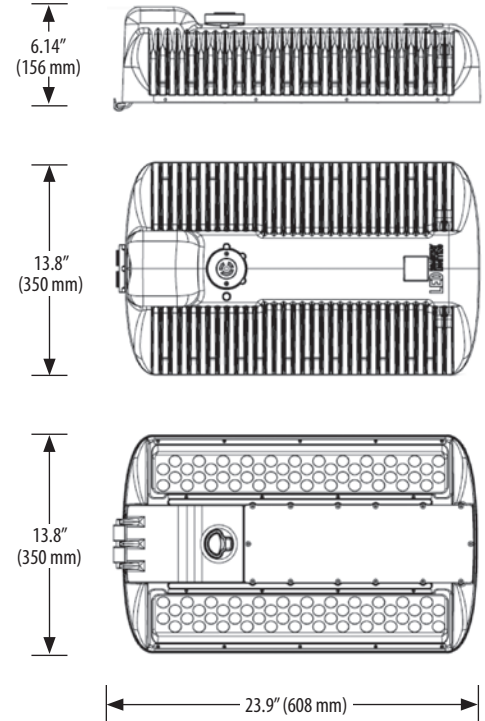
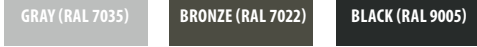


SATELLITE™ SERIES LUMINAIRE: SPECIFICATIONS

SAT-M



Housing: Single piece, die-cast A360 aluminum
 Operating Temperature: -40°C to +60°C (-40°F to +140°F)
 Mounting: 1.625" - 2.375" (42 - 60 mm) O.D. Tenons
 Weight: 25 lb (11.4 kg)
 EPA Rating: <0.699 ft² (< 0.065 m²)
 Lens Material: Acrylic
 Finish: Durable polyester powdercoat topcoat
 Available Colors:



ELECTRICAL	SAT-72M (72 LEDs)					SAT-96M (96 LEDs)				
	Currents (mA)	280 mA	350 mA	450 mA	525 mA	600 mA	280 mA	350 mA	450 mA	525 mA
Power Consumption* (W)	65 W	83 W	107 W	131 W	150 W	86 W	110 W	143 W	175 W	200 W
Input Voltage (V)	Universal Driver 120 - 240V AC, 50 Hz or 60 Hz; 277V, 347V, 480V, and 12 - 24V DC drivers available upon request.									
Surge Protection	20kV/10kA per ANSI C62.41.2-2002									
Power Factor	>0.90									
OPTICS & PERFORMANCE	SAT-72M (72 LEDs)					SAT-96M (96 LEDs)				
	Photometry (Distribution Types)	Type II, Type II Medium, Type II Wide, Type II U, Type III, European Wide, European Narrow, European Long, European Medium								
Color Temperature (CCT)	5000K (Standard), 4000K & 4500K (Optional)									
Color Rendering Index (CRI)	~70 (±5%)									
Drive Currents (mA)	280 mA	350 mA	450 mA	525 mA	600 mA	280 mA	350 mA	450 mA	525 mA	600 mA
Fixture Efficacy (Lm/W)*	97 Lm/W	93 Lm/W	87 Lm/W	84 Lm/W	80 Lm/W	96 Lm/W	92 Lm/W	86 Lm/W	81 Lm/W	78 Lm/W
Fixture Output (Lm)*	6,200 Lm	7,500 Lm	9,300 Lm	10,800 Lm	11,800 Lm	8,250 Lm	10,000 Lm	12,250 Lm	14,100 Lm	15,500 Lm
LED L70 (Hours)	> 100,000 hours (@ 350mA)									
PHOTOCELL & CONTROLS	SAT-72M (72 LEDs)					SAT-96M (96 LEDs)				
	Photocell Options	20-Year Life Photocell with NEMA Twist-Lock (Standard)								
Control & Monitoring	Available with integrated Streetlight Intelligence™ System.									

NOTES: * VALUES SHOWN ARE BASED ON "TYPE II" LM-79 TESTING AND ARE SUBJECT TO ±5% TOLERANCE. ILLUSTRATED ABOVE: SAT-96M IN GRAY (RAL 7035). ALL INFORMATION PROVIDED IS SUBJECT TO CHANGE WITHOUT NOTICE.



115 Chain Lake Drive, Halifax, Nova Scotia, B3S 1B3 Canada
 Toll-Free Phone: +1 (877) 533.5755 Toll-Free Fax: +1 (888) 533.5755 info@ledroadwaylighting.com www.ledroadwaylighting.com

SATELLITE™ SERIES LUMINAIRE: ORDERING GUIDE **SAT-M**

SERIES	LED'S/BODY SIZE	VOLTAGE	PHOTOCELL CONTROL	OPTICS	DRIVE CURRENT
SAT Satellite	72M Medium 96M Medium	0 120V-240V Universal 6 277V-347V Universal 7 480V 8 12V-24V DC (Solar Applications)	R c/w NEMA Photocell Receptacle S Solid Casting (No Photocell Receptacle) Photocells and shorting caps ordered separately.	T2 Type II TW Type II Wide TM Type II Medium TU Type II U T3 Type III EW Euro Wide EN Euro Narrow EL Euro Long EM Euro Medium	280 280 mA 350 350 mA 450 450 mA 525 525 mA 600 600 mA
(A)	(B)	(C)	(D)	(E)	(F)

FINISH	COLOR/TEMPERATURE (CCT)	LENS TYPE	CERTIFICATION	CONTROL OPTIONS
GY Gray (RAL 7035) BK Black (RAL 9005) BZ Bronze (RAL 7022) ----- 4 Digit RAL# (Custom Finish)	1 5000K (Standard/Default) 2 4500K (Optional) 3 4000K (Optional) Other color temperatures available. Please contact factory for details.	A Acrylic	NS USA/Canada (QPS) (Standard/Default) CE European NM NOM-Mexico CT C-TICK (Australia) UL USA (120-240V only)	XX TBA
(G)	(H)	(I)	(J)	(K)

SAMPLE CATALOG NUMBER: | SAT | 96M | 0 | R | T2 | 450 | GY | 1 | A | NS | XX |
(A) (B) (C) (D) (E) (F) (G) (H) (I) (J) (K)

A= Satellite™ Series B= 96 LEDs (Medium Body Fixture) C= 120V - 240V D= NEMA Photocell Receptacle E= Type II Distribution F= 450mA Drive Current G= Gray Finish
H= 5000K CCT I= Acrylic Lens J= CDN/US QPS Certification K= No Control Option Specified

ORDER CONFIRMATION	COMMENTS
PROJECT NAME:	
QUANTITY:	
APPROVED BY:	
DATE:	
(For standard finishes insert 2 digit code. For custom finishes, insert 4 digit RAL number)	
CATALOG NUMBER: SAT _ _ _ _ _ _ _ _ _ _ _ _ _ _ _ _ A _ _ XX	
(A) (B) (C) (D) (E) (F) (G) (H) (I) (J) (K)	

By completing the Order Confirmation above, I certify that I am authorized to sign the confirmation on behalf of the company. Information provided is subject to change without notice.



115 Chain Lake Drive, Halifax, Nova Scotia, B3S 1B3 Canada
Toll-Free Phone: +1 (877) 533.5755 Toll-Free Fax: +1 (888) 533.5755 info@ledroadwaylighting.com www.ledroadwaylighting.com